

Perfect protection for high quality milling cutters!

rose plastic AG
 Rupolzer Straße 53
 D-88138 Hergensweiler/Lindau
 Tel. ++49/83 88/92 00-0
 Fax ++49/83 88/10 24
 info@rose-plastic.de
 www.rose-plastic.de

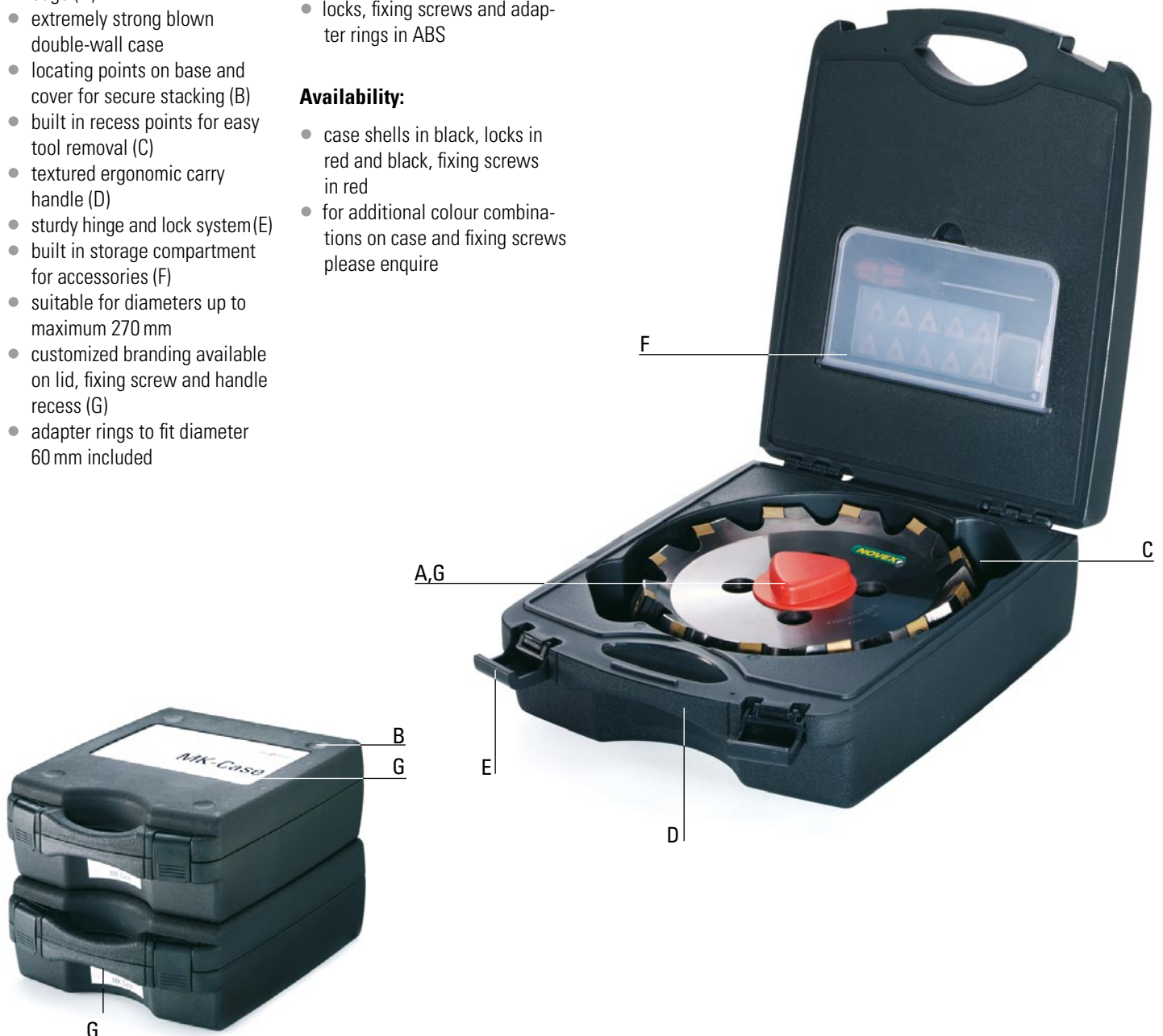
- secure centre fixing screw offers high protection to cutter edge (A)
- extremely strong blown double-wall case
- locating points on base and cover for secure stacking (B)
- built in recess points for easy tool removal (C)
- textured ergonomic carry handle (D)
- sturdy hinge and lock system (E)
- built in storage compartment for accessories (F)
- suitable for diameters up to maximum 270 mm
- customized branding available on lid, fixing screw and handle recess (G)
- adapter rings to fit diameter 60 mm included

Materials:

- case shells in polyethylene (PE)
- locks, fixing screws and adapter rings in ABS

Availability:

- case shells in black, locks in red and black, fixing screws in red
- for additional colour combinations on case and fixing screws please enquire



MK-Case

Article	outside dim. H x W x D	diam. for max. tool size	max. tool height	diam. tool holder	Box Qty.
MK-Case 250	380 x 320 x 130	270	63	40/60	6

dimensions in mm